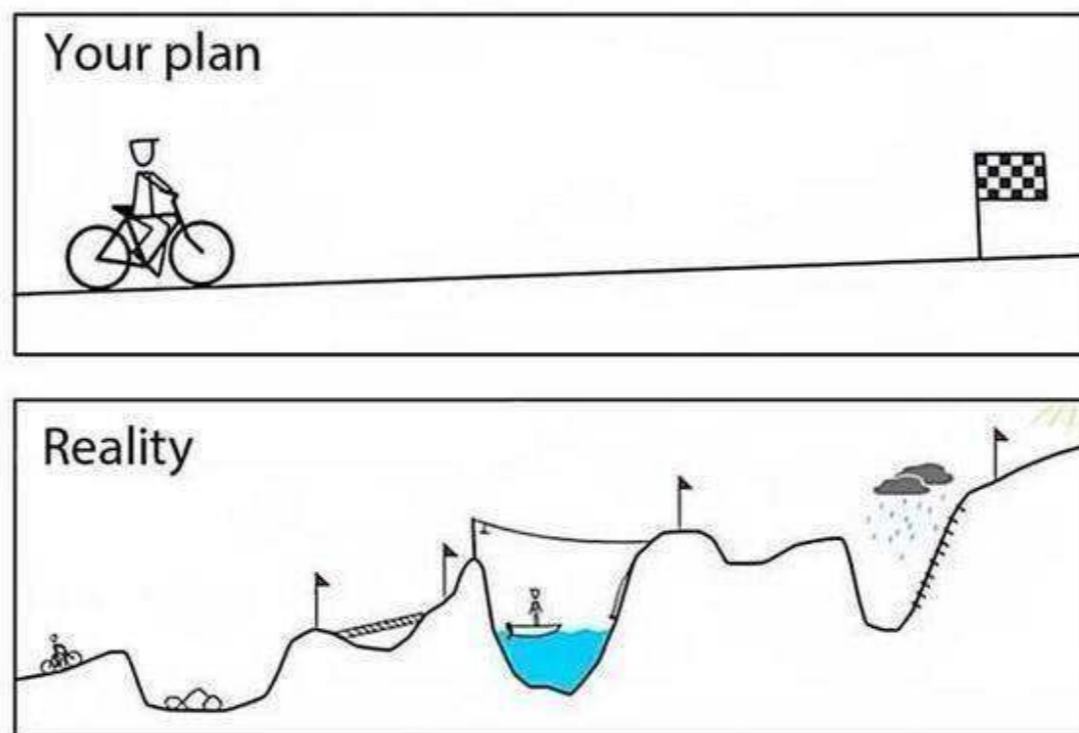




Call for Theses



G. Zachmann
University of Bremen, Germany
cgvr.cs.uni-bremen.de

Our Devices at Your Disposal



Optical Tracking



Eye tracking



HP Reverb G2



Several HTC Vive



Hololens



2x Cyberglove



Leap Motion



ZSpace



3D TV, 60"



GPU's (Nvidia 2080 RTX)



2x Spacemouse



Novint Falcon



Haption 6D Desktop



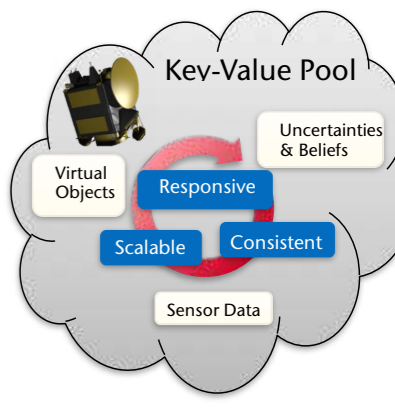
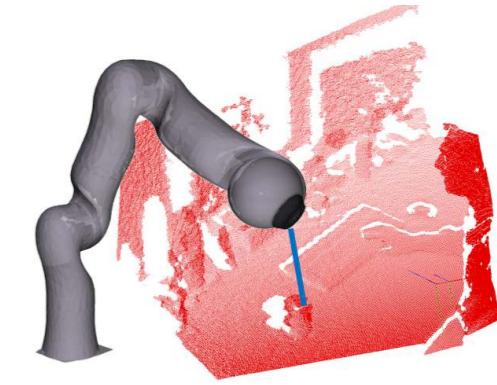
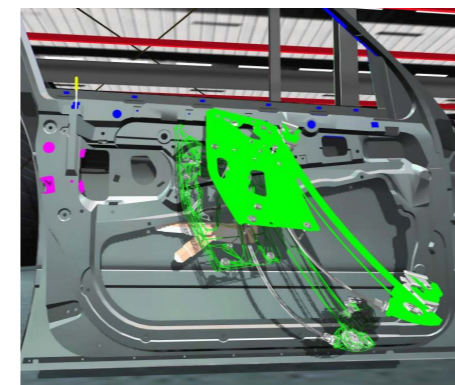
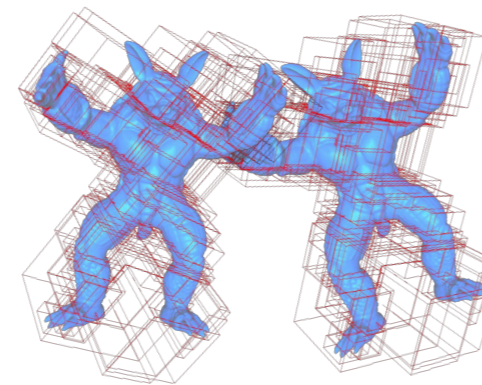
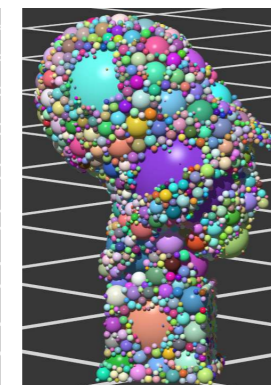
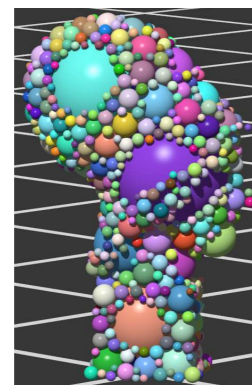
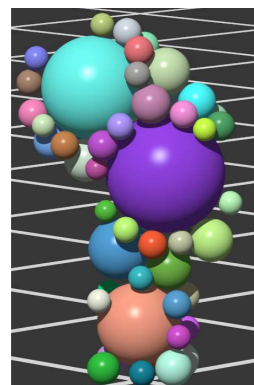
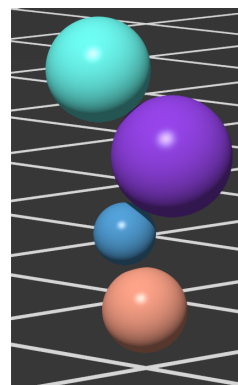
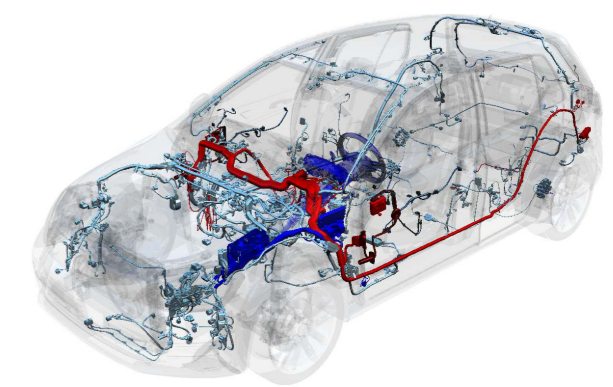
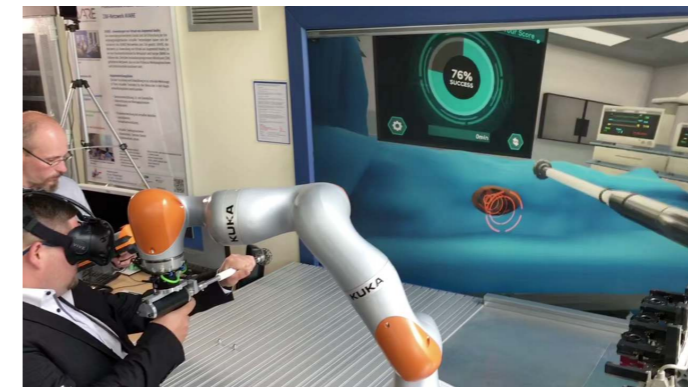
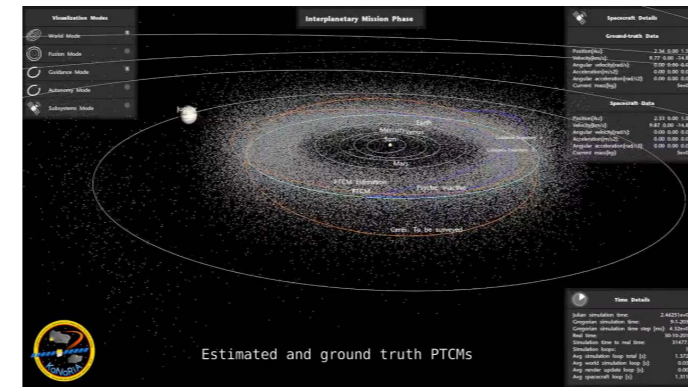
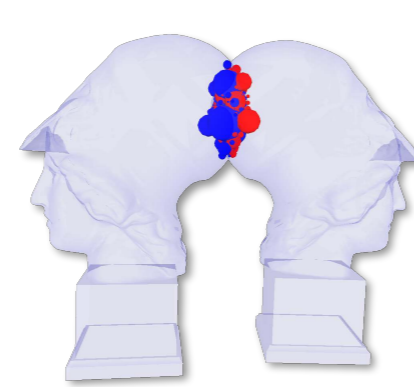
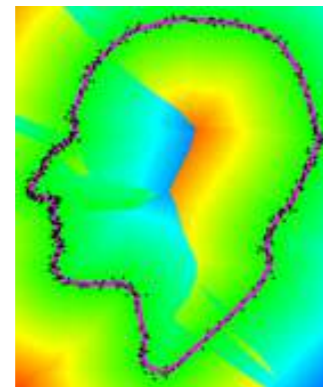
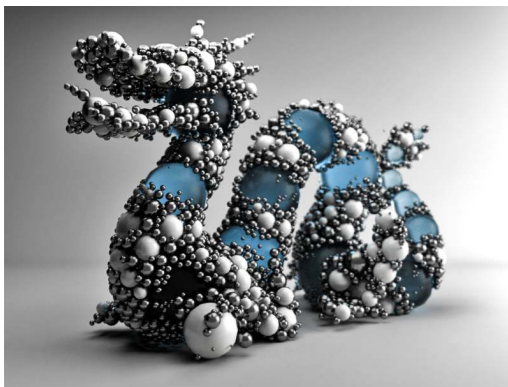
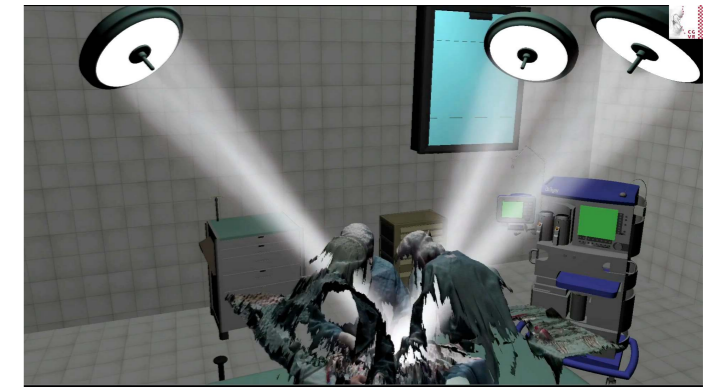
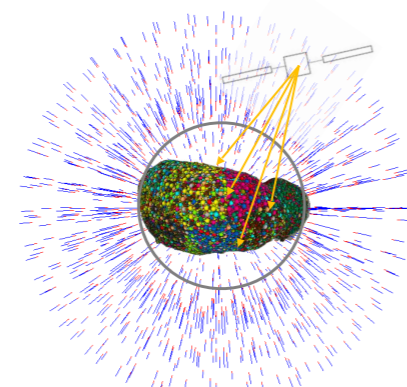
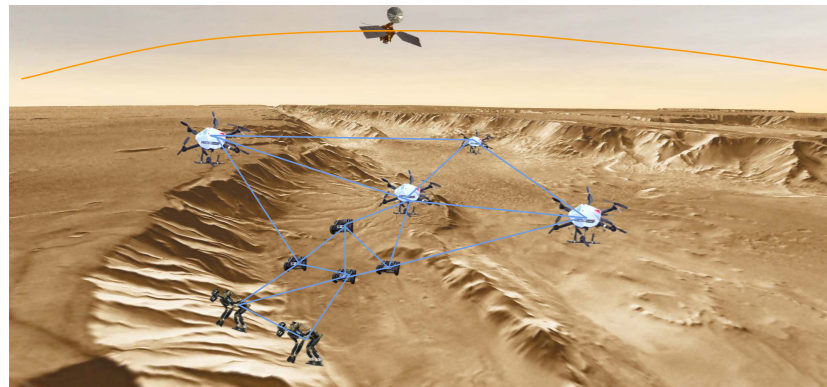
Phantom Omni

2-User Powerwall



Want to Participate in Research Projects?

- Check out <https://cgvr.cs.uni-bremen.de/research> !
- Research areas: geometric computing, medical virtual simulators, space mission simulations, virtual reality, virtual coral reef simulation, collision detection, ...



Want to do Your Thesis with a Company?

- Talk to me, we have lots of connections, such as: Volkswagen, Daimler, BMW, medical small SME's, Maxon (Cinema4D et al.), BeamNG, VR/gaming companies (Szenaris, ijsfontein, engram, Ascora, FAKT, ...), KUKA, ...

